

GLOBAL WINTER SCHOOL DECEMBER 10-13, 2009



GENERAL INFORMATION

- * The winter school will take place in the national park of the Karkonosze Mountains in two hotels: Samotnia and Strzecha Akademicka (pronunciation: Stcheha akademitska), which are around 500m distance from each other and almost 1,5 h walk from the nearest city Karpacz
- * December in Karkonosze means a full winter. Please bring warm clothes, huts, gloves and comfortable, warm shoes.
- * The winter school takes place in a nature reserve. Please walk only on marked trails. In winter this hint is also significant because of avalanche danger
- * The accommodation as well as the seminar rooms are furnished simply. Please do not expect any luxury.
- * Poland's official currency is Zloty. 1 Euro equals around 4,10 Zloty. Since there are no ATMs available in the mountains cash needs to be withdrawn before arriving in the mountains (there will be a stop on the way to Karpacz)
- * You can find information about the venues under: www.samotnia.com.pl; www.strzecha-akademicka.com.pl

ARRIVAL

- * Students from Leipzig take train (Sachsenticket, approx. 15 Euro return ticket per person) from Leipzig to Görlitz and than by bus to Karpacz. We plan to start in Leipzig at 8:58 and arrive to Karpacz around 15.30 (Parking place by the Wang Church)

- * Students from Vienna: direct bus from Vienna takes them to Karpacz
- * Students from Wroclaw: bus starts at Olówek dorm at 11.15 going through the airport to take fellows from London. Approximate arrival to Karpacz 15.00 (Parking place by the Wang Church)
- * All groups will start their hike to Samotnia/Strzecha around 15.30-16.00 together with a guide from the National Park Karkonosze. The walk will take approx. 1.5 hours. The luggage will be carried up by a jeep or snow scooter to the accommodation venues. Because we will not be able to arrive to the venues before dusk it would be great if the participants could take torches.



ACCOMMODATION AND FOOD

- * Accommodation

All rooms in Strzecha Akademicka are furnished with a wash bowl, whereas shower and toilets are to be found on the corridor only. Warm water will be provided only in the morning and evening. Please take your own towels, soap, shampoo, etc. Participants will be accommodated max 5 persons per room



- * Food

Bars with warm food/drink in both hostels are open from 8 am to 8 pm. The costs for breakfast and dinner will be covered by the organizers for all first year students, whereas lunch needs to be paid by each participant individually (approx. 6 Euro/meal). Please see a short vocabulary below the text.



Coffee and tea will be provided during breaks

- * Internet: WLAN is provided in Samotnia and Strzecha Akademicka
- * Additional remark: in December both hostels usually carry out renovations and reparations for approaching winter season. Thus the participants of the winter school are asked to take into account little obstacles during the stay



EXCURSIONS

- * On Saturday walking tour to Snieżka - Schneekoppe (1602m) with two guides is on the schedule. It will take 4,5 hours.
- * Before the walk to Samotnia (day of arrival) the Wang church can be visited
- * It is also possible to undertake short walks during the breaks – e.g. to Pielgrzymy Rocks (30 minutes from Samotnia)



FREE TIME

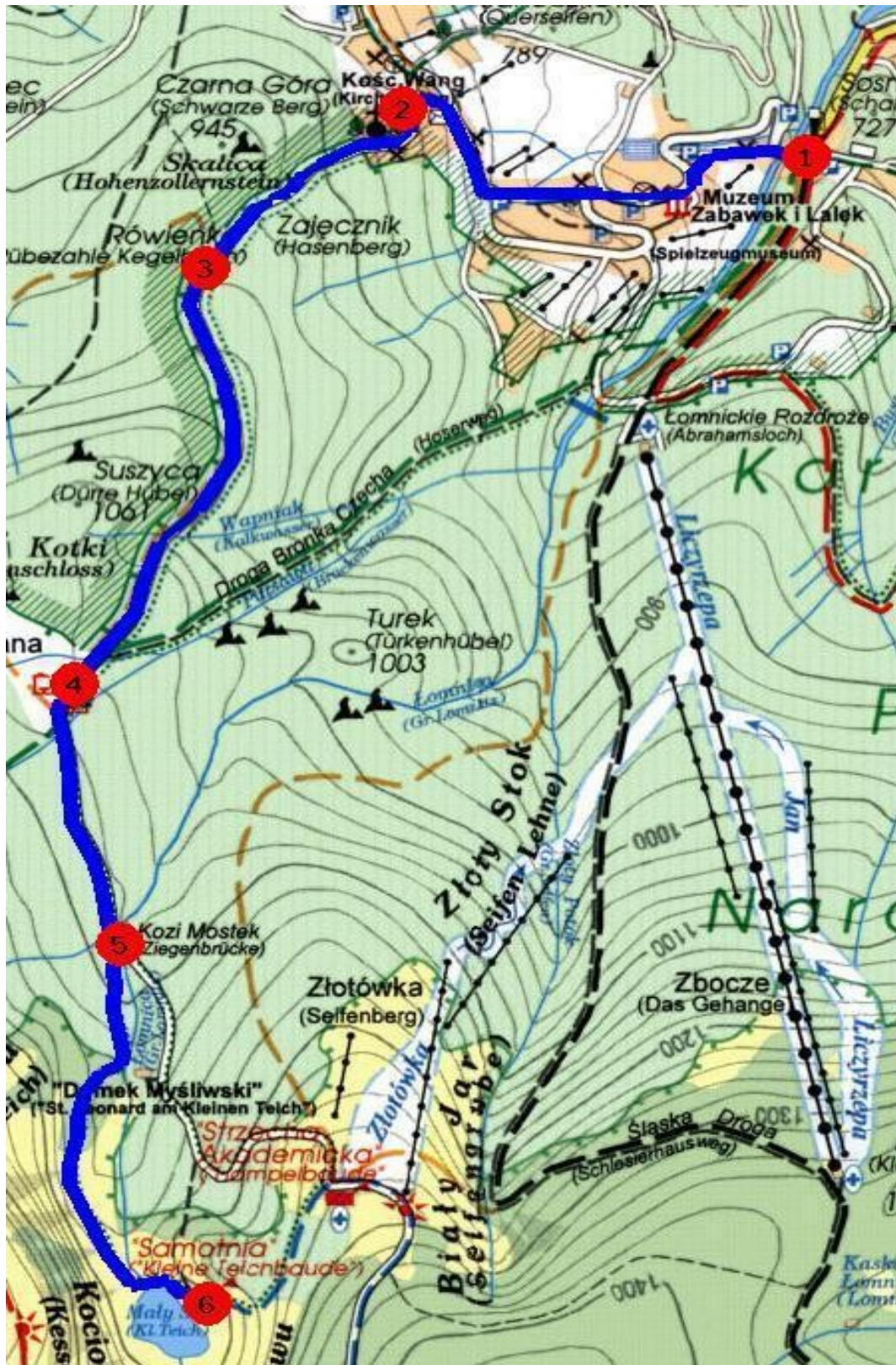
- * Usually the bar in Samotnia is open as long as guests need it. The bar floor offers also enough space for dancing. Please take your own music on cd/dvd/mp3.
- * If you play music please take your instruments. There is a great atmosphere for spontaneous playing. There is a piano in the veranda room in Samotnia.
- * You can take advantage of sauna in Strzecha Akademicka (50 Zloty per group of 7-8 persons)
- * It will be possible to watch movies in the evenings (Samotnia club room). Please bring your favorite movies with you.



POLISH YOUR ENGLISH: BUYING FOOD AND DRINKS IN SAMOTNIA/STRZECHA

Śniadanie:	Breakfast
Obiad	lunch
Cena	Price
Dodatki	Supplements
Chleb	Bread
masło	butter
dżem	jam
miód	honey
ser	cheese
serek topiony	cream cheese
twarożek	cottage cheese
ser biały w oliwie	curd in oil
pasztet	pate
wędlina	cold cut
jajko gotowane	boiled egg
jajecznica na maśle	scrambled eggs with butter
jajecznica na kielbasie	scrambled eggs with sausage
jajka sadzone	fried eggs
smalec	lard
chrzan	horse radish
majonez	mayonnaise
musztarda	mustard
kielbasa	sausage
kielbasa pieczona	bake sausage
kanapka z wędliną	sandwich with cold cut
kanapka z serem	sandwich with cheese
naleśnik z serem	pancakes with cottage cheese
bigos	stewed cabbage (boiled cabbage with sausages)
pierogi ruskie	dumplings with potato and cheese stuffing
fasolka po bretońsku	beans
zupa pomidorowa	tomato soup
krupnik	barley soup
żurek	white borsch
barszcz czysty	borsch
kotlet schabowy	cutlet
kurczak pieczony	roasted chicken
Golonka	hand of pork
Szaszłyk	shashlik
ser smażony	fry cheese
ziemniaki	potatoes
frytki	french fries
kasza gryczana	buckwheat grits
kopytka	potato dumplings
surówki	salads
z marchewki	with carrot
z kapusty pekińskiej	with cabbage
ciasto	cake
szarlotka na ciepło	hot apple pie
napoje	drinks
herbata	tea
kawa	coffee
piwo	beer
piwo z sokiem	beer with syrup
sok	juice
wino	wine
woda	water
cukier	sugar

MAP 1 OF TRAILS AROUND STRZECHA AKADEMICKA AND SAMOTNIA



MAP 2 OF TRAILS IN KARPACZ AREA (DISTANCE IN MINUTES)

